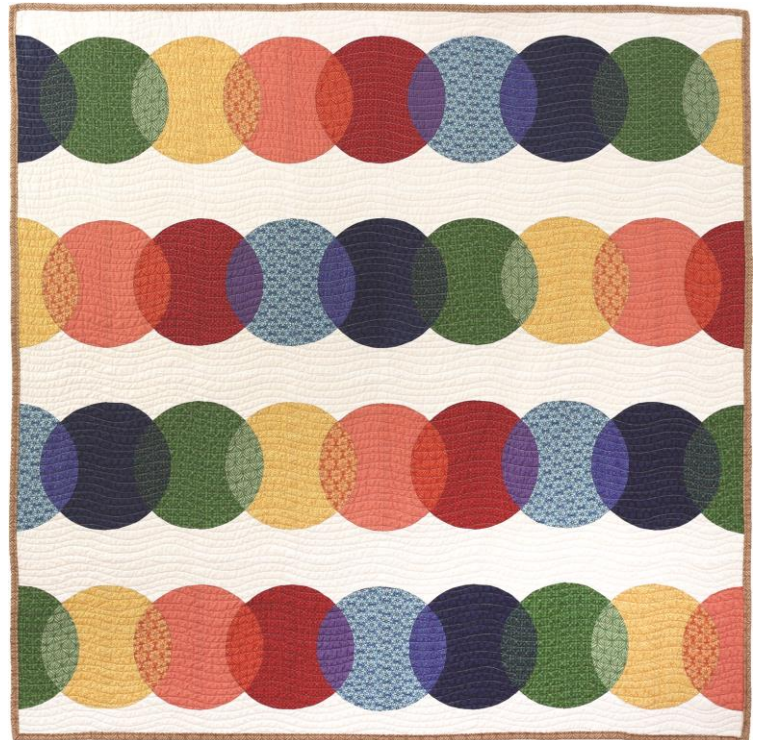


GO! Local Color Quilt by Bill Kerr of Modern Quilt Studio

Finished Size 48" x 48"

Fabrics are from Andover Fabrics

GO!® Dies Used, Number of Shapes to Cut & Fabric Requirements



Fabric Color	GO! Dies Used	Number of Shapes to Cut	Fabric Required
White or Off-White	GO! Local Color by Bill Kerr (55452) Piece A	Cut 7—7" x width of fabric (WOF) strips. Fanfold into 4" widths. Cut 64 of Piece A.	1 3/4 yards
Assorted Colors	GO! Local Color by Bill Kerr (55452) Piece B	Read Design Note below first. Cut 7 total from assorted colors—9 1/2" x WOF strips. Fanfold into 4" widths. Cut 64 of Piece B.	1/2 yard each of 6 fabrics
Assorted Colors	GO! Local Color by Bill Kerr (55452) Piece C	Read Design Note below first. Cut 4 total from assorted colors—7 1/4" x WOF strips. Fanfold into 3 3/4" widths. Cut 32 of Piece C.	1/4 yard each of 6 fabrics

Additional Fabrics Needed

- Binding—1/2 yard
- Backing—3 yards
- Batting—52" x 52"

Design Note: The goal of this design is to create a transparency effect.

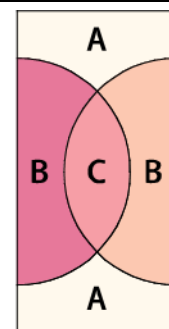
You can blend colors or values as desired.

For the larger B pieces, fabrics used were:

dark blue, medium green, light blue, red, orange and yellow.

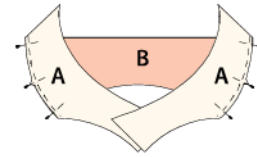
For the C overlap pieces, fabrics used were: yellow-orange, medium orange, violet,

medium blue, blue-green and light green. You can experiment by cutting pieces and laying them out before sewing.

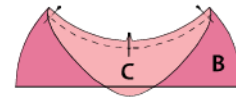


Sewing Directions

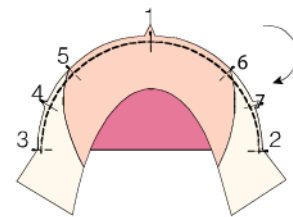
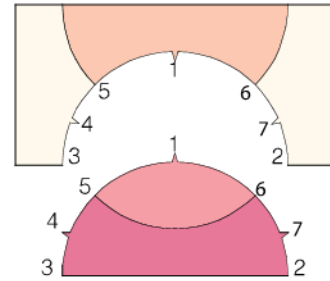
1. With right sides facing, pin the top curved edges of A pieces to each side of B lining up notches as shown.
2. With A pieces facing up, sew together (keeping the B piece on the bottom prevents puckers). Press the seams open.
3. With right sides facing, pin the bottom edge of C to the top cutout of another B lining up notches as shown.
4. Sew with C piece on the bottom to prevent puckers. Press the seams open.
5. Place the two pieced units, right-side up. Turn the ABA piece upside down so its right side faces the right side of the BC semi-circle. Align, pinning at notches, seams and ends as shown.
6. Sew with BC unit facing up. Press the seams open.
7. Repeat steps 1 through 6 to make a total of 32 blocks.
8. Lay out blocks as shown.
9. Pin and sew blocks into rows. Press the seams open.
10. Pin and sew rows together to make the quilt top. Press the seams open.



steps 1-2



steps 3-4



steps 5-6

Quilting & Finishing

1. Layer quilt top with batting and backing.
2. Pin or baste layers together.
3. Model was custom machine quilted.
4. Attach bias binding, mitering the corners.

