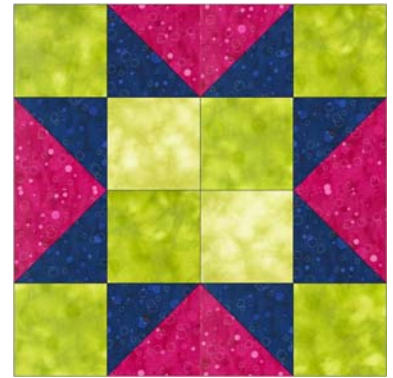






## GO! 4-Patch Star 6" Block Pattern

Finished Block Size 6" x 6"



### GO!® Dies Used, Number of Shapes to Cut & Fabric Requirements

Fabric Color	Shape	GO! Dies Used	Number of Shapes to Cut	Fabric Required for One Block
Pink		GO! Quarter Square Triangle-3" Finished Square (55396)	4	1/4 yard
Light Green		GO! Square-2" (1½" Finished) (55022)	2	1/8 yard
Green		GO! Square-2" (1½" Finished) (55022)	6	1/8 yard
Blue		GO! Half Square Triangle-1½" Finished Square (55319)	8	1/8 yard

### Block Sewing Directions

1. Pin and sew two light green 1½" finished squares and two green 1½" finished squares into a 4-patch unit. Press seams toward green squares.



2. Pin and sew one pink 3" finished quarter square triangle (QST) and two blue 1½" finished half square triangles (HST's) together to form a flying geese unit as shown. Make four flying geese units.



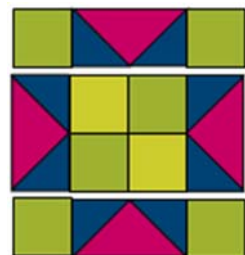
3. Pin and sew one flying geese unit to each side of 4-patch unit as shown. Press seams open.



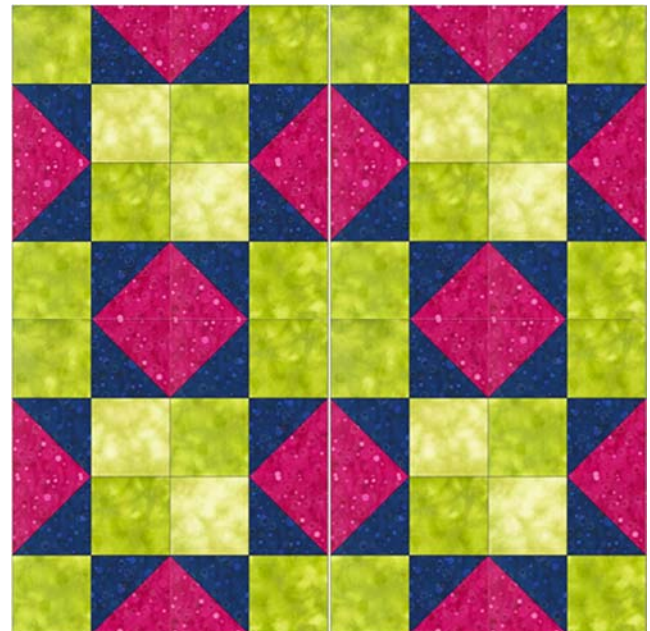
4. Pin and sew one green 1½" finished square to each side of one flying geese unit as shown. Press seams towards squares. Make two combined units.



5. Pin and sew one combined unit to top and bottom of block center to complete block. Press seams open.



### Alternate Four Block Option



**TIPS:** Combine with other GO! Mix & Match Quilt blocks such as Uneven 9-Patch or Depression.