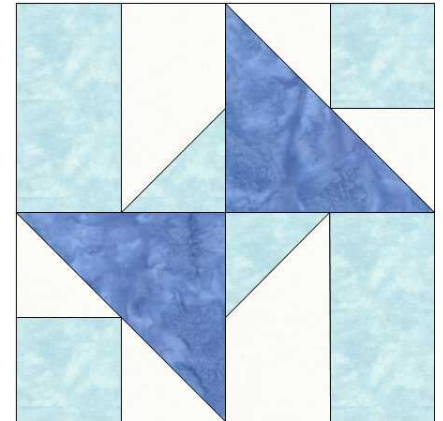








## GO! Woodturning 8" Block Pattern

Finished Block Size 8" x 8"

For use with GO! Qube™ Mix & Match 8" Block (55776)  
and GO! Qube™ 8" Companion Set-Classics (55780)



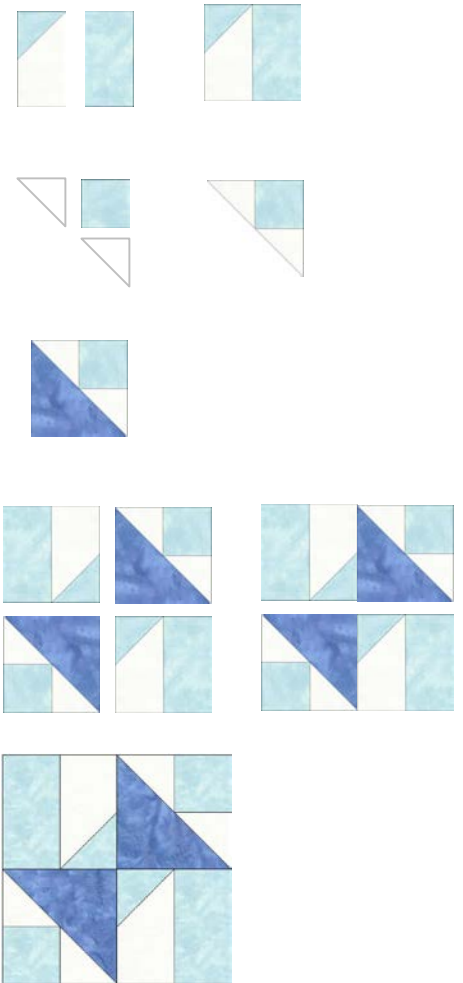
Fabric Color	Shape & #	GO! Dies Used	Number of Shapes to Cut	Fabric Required for One Block
Light Blue	 5	GO! Half Square Triangle-2" Finished Square (55712)	2	1/4 yard
Light Blue	 2	GO! Square-2½" (2" Finished) (55709)	2	Yardage included above
Light Blue	 8	GO! Rectangle-2½" x 4½" (2" x 4" Finished) (55715)	2	Yardage included above
Blue	 3	GO! Half Square Triangle-4" Finished Square (55710)	2	1/4 yard
White	 5	GO! Half Square Triangle-2" Finished Square (55712)	4	1/4 yard
White	 9	GO! Chisels-2" x 4" Finished (55734)	2 <i>Note: Cut chisels fabric wrong side up</i>	Yardage included above

### Block Sewing Directions

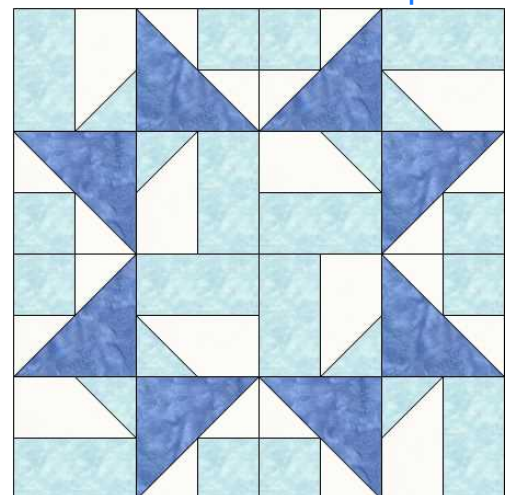
1. Pin and sew one light blue 2" finished half square triangle (HST) and one white chisel together as shown. Press seam toward the light blue triangle. Make two white chisel units.



2. Pin and sew one light blue 2" x 4" finished rectangle and one white chisel unit together into a quarter block as shown. Press seam toward the light blue rectangle. Make two chisel quarter block units.
3. Pin and sew one white 2" finished HST to side and bottom of one light blue 2" finished square as shown. Press seams toward added triangles. Make two combined triangle units.
4. Pin and sew one blue 4" finished HST and one combined triangle unit together as shown. Press seams toward blue triangle. Make two triangle quarter block units.
5. Lay out two chisel quarter block units and two triangle quarter block units as shown.
6. Pin and sew into half blocks. Press seams in alternate directions for each half block. Make two half blocks.
7. Pin and sew half blocks together to complete the block. Press seam open.



**Alternate Four Block Option**



**TIPS:**

*Combine with other GO! Qube Mix & Match 8" Quilt Blocks such as Double Cross or Spool.*