

GO! Out On A Limb Notebook Cover

Finished Size 15½" x 10½" (open)
7¾" x 10½" (closed)

Fabrics provided by Island Batik



GO!® Dies Used, Number of Shapes to Cut & Fabric Requirements

Fabric Color	Shape	GO! Dies Used	Number of Shapes to Cut	Fabric Required
NOTE: Apply fusible web to the wrong side of asterisked fabrics following manufacturer's instructions before cutting appliqué shapes.				
*Pink		GO! Owl (55333)	Cut 1—4 3/8" x 5" rectangle. Lay rectangle on owl body and cut 1—owl body (3 7/8"W x 4 1/2"H)	Fat eighth or scrap
*Purple		GO! Owl (55333)	Cut 1—4 3/8" x 5" rectangle. Lay rectangle on owl body and cut 1—owl body (3 7/8"W x 4 1/2"H)	Fat eighth or scrap
*Purple		GO! Owl (55333)	Cut 2—1 1/2" x 2 3/8" rectangles. Lay rectangles on owl wing and cut 2—owl wings (3/4" W x 1 7/8" H)	Yardage included above
*Teal		GO! Owl (55333)	Cut 2—1 1/2" x 2 3/8" rectangles. Lay rectangles on owl wing and cut 2—owl wings (3/4" W x 1 7/8" H)	1/3 Yard
Teal		GO! Strip Cutter-3 1/2" (3" Finished) (55085)	Cut 1—3 1/2" x WOF strip. Sub cut: 1—18" strip	Yardage included above
Teal		GO! Strip Cutter-4 1/2" (4" Finished) (55054)	Cut 1—4 1/2" x WOF strip. Sub cut: 2—11" strip	Yardage included above
*Green		GO! Owl (55333)	Cut 12—1 1/2" x 2 3/8" rectangles. Lay rectangles on owl wing and cut 12—owl wings (3/4" W x 1 7/8" H)	Fat eighth
*Orange		GO! Owl (55333)	Cut 2—1" x 1" square. Lay square on owl beak and cut 2—owl beak (1/2"W x 1/2"H)	Fat eighth or scrap
Assorted Browns		GO! Square-2" (1 3/4" Finished) (55022)	Cut 4—6 1/2" x 4 1/2" rectangles. Lay rectangles on lengthwise grain and cut 24—2" squares	5 Assorted fat eighths or scraps
*Dark Brown		GO! Owl (55333)	Cut 4—1" x 1" squares. Lay square on 1/2" circle and cut 4—1/2" circles	Yardage included above
*White		GO! Owl (55333)	Cut 4—2" x 2" squares. Lay squares on 1 7/16" circle and cut 4—1 7/16" circles	1/4 Yard
White		GO! Strip Cutter-5 1/2" (5" Finished) (55026)	Cut 1—5 1/2" x WOF strip. Sub cut: 1—18" strip	Yardage included above

Additional Fabrics Needed:

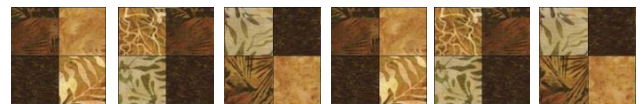
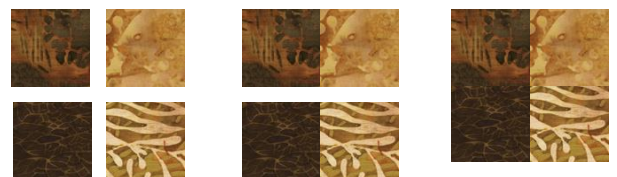
- Lining—16" x 11"
- Muslin—20" x 15"
- Batting—20" x 15"
- Fusible Web— $\frac{1}{3}$ yard

Additional Supplies Needed:

- Grosgrain Ribbon—1 yard coordinating ($\frac{3}{4}$ " or 1" wide) (Sub cut: 2—18" lengths)
- Composition Notebook/Journal (7 $\frac{1}{2}$ " x 9 $\frac{3}{4}$ ") (available where office supplies are sold)

Sewing Directions

1. Lay out four assorted brown 2" squares to form a four patch block as shown.
2. Pin and sew two rows. Press seams in alternating directions for each row.
3. Pin and sew two rows. Press seams toward added rows. Make six blocks.
4. Lay out, pin, and sew six four patch blocks into one row unit. Press seams in one direction.
5. Layout one white 5 $\frac{1}{2}$ " x 18" strip, the four patch block unit, and one teal 2 $\frac{1}{2}$ " x 18" strip as shown.
6. Pin and sew the three row units together. Press seams toward added rows.
7. Fuse and machine appliqué owl shapes and leaves in place as shown, keeping in mind you will be trimming the unit to 16" x 11".
8. Layer batting between pieced unit and muslin. Pin or baste layers together. Quilt as desired.
9. Trim unit to 16" x 11".



10. With the quilted unit right side up, place one coordinating 18" length of ribbon in the center of the each short side of the quilt unit. Baste each ribbon length in place, stitching $\frac{1}{8}$ " from the edge of the quilted unit.
11. Press both teal $4\frac{1}{2}$ " x 11" strips in half lengthwise with wrong sides together. These will be the inside flaps.
12. With the quilted unit right side up, place one pressed inside flap on the left side of the quilted unit, matching raw edges. Baste in place, stitching $\frac{1}{8}$ " from the edge. Repeat for right side.
13. With the quilted unit right side up, place the lining fabric on top, right sides together. Sew a scant $\frac{1}{4}$ " seam on all four sides, leaving an opening in the center bottom for turning.
14. Clip corners and turn right side out. Turn flaps to lining side. Press.
15. Slip-stitch the opening left for turning closed.
16. Insert composition notebook/journal into flaps and tie closed with ribbon. Trim ribbon to desired lengths.

