


How to use your GO! Qube with this Pattern

Use this chart to find which GO! Qube dies are compatible with the dies listed on the pattern



Quilt Shape

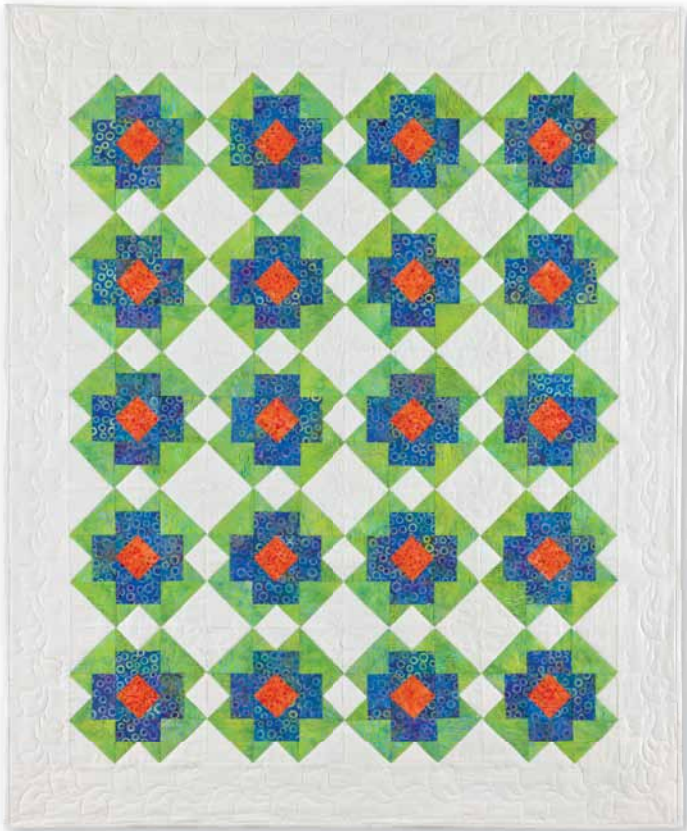
GO! Qube™ Item #'s (listed first) or GO! Die Item #'s (sold separately)

By Number	6" Finished Block	8" Finished Block	9" Finished Block	12" Finished Block
	GO! Square-3 $\frac{1}{2}$ " (3" Finished) 55775 or 55006	GO! Square-4 $\frac{1}{2}$ " (4" Finished) 55776, 55060 or 55018	GO! Square-5" (4 $\frac{1}{2}$ " Finished) 55777 or 55010	GO! Square-6 $\frac{1}{2}$ " (6" Finished) 55778* or 55000*
	GO! Square-2" (1 $\frac{1}{2}$ " Finished) 55775 or 55022	GO! Square-2 $\frac{1}{2}$ " (2" Finished) 55776, 55059 or 55018	GO! Square-2 $\frac{3}{4}$ " (2 $\frac{1}{4}$ " Finished) 55777 or 55395	GO! Square-3 $\frac{1}{2}$ " (3" Finished) 55778 or 55006
	GO! Half Square Triangle- 3" Finished Square 55775 or 55009	GO! Half Square Triangle- 4" Finished Square 55776 or 55031	GO! Half Square Triangle- 4 $\frac{1}{2}$ " Finished Square 55777 or 55397	GO! Half Square Triangle- 6" Finished Square 55778* or 55001*
	GO! Quarter Square Triangle- 3" Finished Square 55775 or 55396	GO! Quarter Square Triangle- 4" Finished Square 55776, 55316 or 55047	GO! Quarter Square Triangle- 4 $\frac{1}{2}$ " Finished Square 55777 or 55398	GO! Quarter Square Triangle- 6" Finished Square 55778*, 55002 or 55456
	GO! Half Square Triangle- 1 $\frac{1}{2}$ " Finished Square 55775 or 55319	GO! Half Square Triangle- 2" Finished Square 55776, 55063 or 55018	GO! Half Square Triangle- 2 $\frac{1}{4}$ " Finished Square 55777 or 55147	GO! Half Square Triangle- 3" Finished Square 55778, 55009 or 55456
	GO! Square on Point-2 $\frac{5}{8}$ " (2 $\frac{1}{8}$ " Finished) 55775 or 55394	GO! Square on Point-3 $\frac{1}{4}$ " (2 $\frac{3}{4}$ " Finished) 55776 or 55317	GO! Square on Point-3 $\frac{11}{16}$ " (3 $\frac{3}{16}$ " Finished) 55777 or 55106	GO! Square on Point-4 $\frac{3}{4}$ " (4 $\frac{1}{4}$ " Finished) 55778 or 55019
	GO! Parallelogram 45°-2 $\frac{1}{4}$ " x 2 $\frac{13}{16}$ " Sides (1 $\frac{1}{2}$ " x 2 $\frac{1}{8}$ " Finished) 55775 or 55402	GO! Parallelogram 45°-2 $\frac{3}{4}$ " x 3 $\frac{1}{2}$ " Sides (2 $\frac{1}{16}$ " x 2 $\frac{13}{16}$ " Finished) 55776 or 55318	GO! Parallelogram 45°-2 $\frac{15}{16}$ " x 3 $\frac{7}{8}$ " Sides (2 $\frac{1}{4}$ " x 3 $\frac{3}{16}$ " Finished) 55777 or 55148	GO! Parallelogram 45°-3 $\frac{11}{16}$ " x 4 $\frac{15}{16}$ " Sides (3" x 4 $\frac{1}{4}$ " Finished) 55778* or 55004
	GO! Rectangle- 2" x 3 $\frac{1}{2}$ " (1 $\frac{1}{2}$ " x 3" Finished) 55775 or 55158	GO! Rectangle- 2 $\frac{1}{2}$ " x 4 $\frac{1}{2}$ " (2" x 4" Finished) 55776 or 55159	GO! Rectangle- 2 $\frac{3}{4}$ " x 5" (2 $\frac{1}{4}$ " x 4 $\frac{1}{2}$ " Finished) 55777 or 55107	GO! Rectangle- 3 $\frac{1}{2}$ " x 6 $\frac{1}{2}$ " (3" x 6" Finished) 55778* or 55005

*not compatible with GO! Baby

GO! Garden Party Quilt

finished size 44" x 53"



Fabric provided by Island Batik.

GO!® DIES USED

- GO! Rectangle-2" x 3½" (1½" x 3" Finished) (55158)
- GO! Half Square Triangle-3" Finished Square (55009)
- GO! Square on Point-2⅝" (2⅛" Finished) (55394)
- GO! Half Square Triangle-1½" Finished Square (55319)
- GO! Quarter Square Triangle-3" Finished Square (55396)
- GO! Strip Cutter-2½" (2" Finished) (55017 or 55014)
- GO! Strip Cutter-4½" (4" Finished) (55054)

FABRIC REQUIREMENTS

- Fabric 1—2 yards
- Fabric 2—1¼ yards
- Fabric 3—1¼ yards
- Fabric 4—¼ yard
- Batting—54" x 60"
- Backing—3 yards

CUTTING DIRECTIONS

Fabric 1:

- Cut 80—3" finished half square triangles
- Cut 80—3" finished quarter square triangles
- Cut 5—4½" x width of fabric (WOF) strips (Set aside for border)
- Cut 5—2½" x WOF strips (Set aside of binding)

Fabric 2:

- Cut 80—3" finished half square triangles
- Cut 160—1½" finished half square triangles

Fabric 3:

- Cut 80—1½" finished half square triangles
- Cut 80—2" x 3½" rectangles

Fabric 4:

- Cut 20—2⅝" squares

SEWING DIRECTIONS

1. Layer one Fabric #1, 3" half square triangle on top of one Fabric #2, 3" half square triangle.
2. Sew together to form one half square triangle unit.
3. Press towards Fabric #2. Block should measure 3½" x 3½".
4. Make a total of 80, Unit #1.
5. Layer one Fabric #2, 1½" half square triangle on top of one Fabric #1, 3" quarter square triangle. Sew together.
6. Press towards Fabric #2.
7. Layer one Fabric #2, 1½" half square triangle on other side of Fabric #1, 3" half square triangle. Sew together.
8. Press towards Fabric #2. Blocks should measure 2" x 3½".
9. Make a total of 80 Flying Geese units.
10. Layer one Flying Geese unit on top of one Fabric #3, 2" x 3½" rectangle. Sew together.
11. Press towards Fabric #3. Blocks should measure 3½" x 3½".
12. Make a total of 80, Unit #2.
13. Sew four Fabric #3, 1½" half square triangles onto one Fabric #4, 2⅝" square.
14. Press towards Fabric #3. Blocks should measure 3½" x 3½".
15. Make a total of 20, Unit #3.



Unit #1



Flying Geese Unit

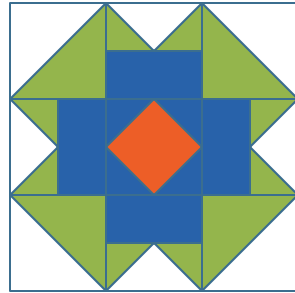


Unit #2



Unit #3

16. Lay out four Unit #1 blocks, four Unit #2 blocks, and one Unit #3 block as shown.



Garden Party Block

17. Sew blocks into rows. Pressing seams in opposite directions

18. Sew rows together. Pressing seams in opposite directions. Blocks should measure $9\frac{1}{2}$ " x $9\frac{1}{2}$ ".

19. Make a total of 20 Garden Party Blocks.

20. Lay out blocks so the quilt top is four blocks wide and five blocks long.

21. Pin and sew blocks into rows pressing seams in opposite directions.

22. Pin and sew rows together to make center of quilt. Press seams in same direction.

23. Sew five border strips together along short end to make one long strip.

24. Measure length of your quilt top and cut two borders to this length.

25. Pin and sew borders onto left and right sides of the quilt. Press towards borders.

26. Measure width of your quilt top and cut two borders to this width.

27. Pin and sew border onto top and bottom of quilt. Press towards borders.

QUILTING AND FINISHING

1. Layer quilt top with batting and backing.
2. Pin or baste layers together.
3. Model was custom machine quilted.
4. Add binding, mitering the corners.