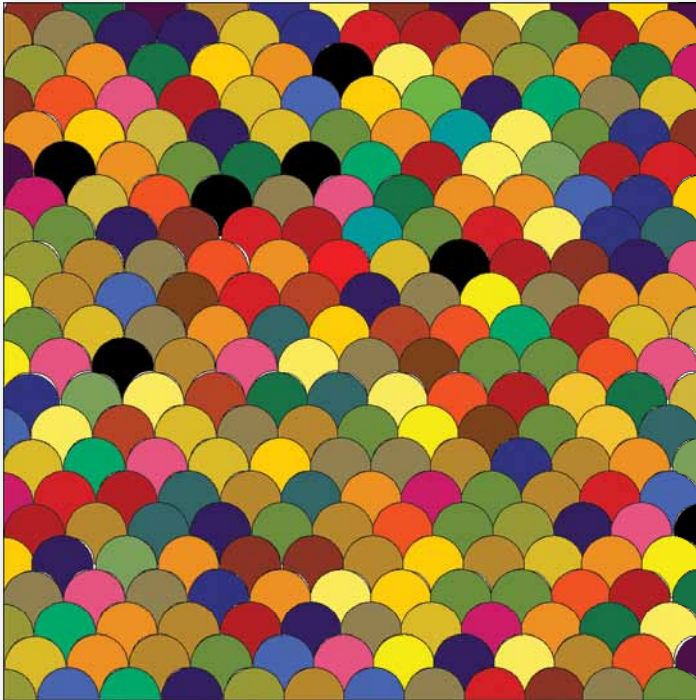


GO! Sugar Scoops Quilt

finished size 45" x 45"



GO!® DIES USED

- GO! Clamshell-4" Finished (55435)
- GO! Strip Cutter-2½" (2" Finished) (55017 or 55014)

FABRIC REQUIREMENTS

- Fabric 1 (Variety of Prints)—264, 5" x 5" Squares or 33, 5" x WOF Strips
- Binding—½ yard
- Batting—55" x 55"
- Backing—3 yards

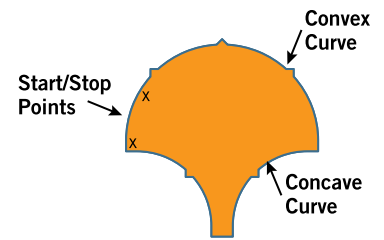
CUTTING DIRECTIONS

Fabric 1:

- Cut 264—4" Finished Clamshells

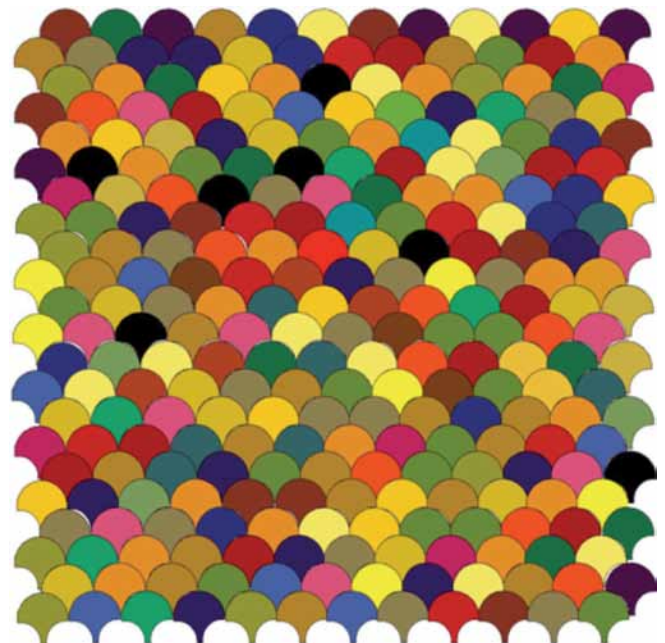
Binding Fabric:

- Cut 5—2½" x WOF strips

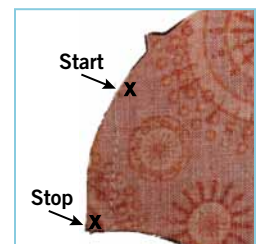


SEWING DIRECTIONS

1. Lay out the 264, 4" Finished Clamshells into 24 rows of 12 Clamshells offsetting every other row.



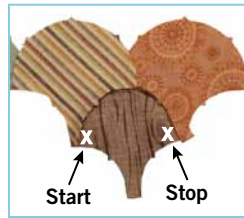
2. **Row #1:** With right sides together sew together two Clamshells that overlap approximately ¾".



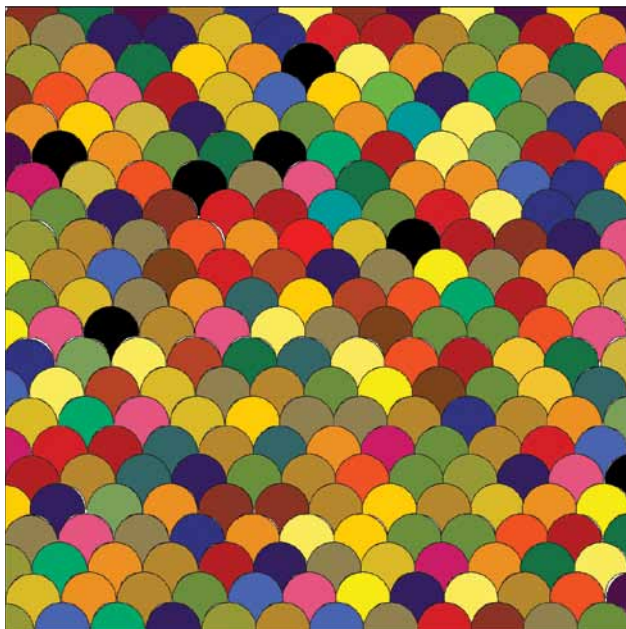
3. Repeat to create a row of 12 Clamshells.



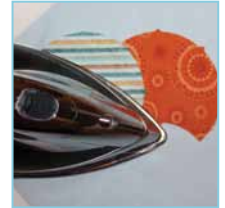
4. **Row #2:** Glue baste the first Clamshell for Row #2 using the glue basting method (See 'How to Glue Baste'). Start at the bottom of the stem and slowly sew all the way around the half circle.



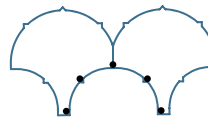
5. Repeat to complete Row #2.
6. Add remaining rows by layering the concave curve on top of the convex curve and gluing in place, sewing and pressing.
7. Trim edges even when done.



HOW TO GLUE BASTE



1. Place a small drop of glue where your seam starts.
2. Align the corresponding clamshell on top.
3. Using a dry iron, heat until the glue is dry.



4. Repeat all around the curve.



5. This is what it should look like when you get ready to sew.

QUILTING AND FINISHING

1. Layer quilt top with batting and backing.
2. Pin or baste layers together.
3. Add binding, mitering the corners.