

GO! Snowball Fight Quilt

finished size 56" x 56"



Fabric provided by Island Batik.

GO!® DIES USED

- GO! Snowball-6" Finished (55330)
- GO! Value Die (55018)
- GO! Strip Cutter-2½" (2" Finished) (55017 or 55014)

FABRIC REQUIREMENTS

- Fabric 1—2 yards
- Fabric 2—2 yards
- Fabric 3—1½ yards
- Binding—¾ yard
- Batting—64" x 64"
- Backing—4 yards

CUTTING DIRECTIONS

Fabric 1:

- Cut 7—3" x width of fabric (WOF) strips
Sub cut into 164—half square triangles
- Cut 13—3" x WOF strips
Sub cut into 160—2½" squares

Fabric 2:

- Cut 5—7" x WOF strips
Sub cut into 25—6" finished Snowball blocks
- Cut 7—3" x WOF strips
Sub cut into: 100—2½" squares

Fabric 3:

- Cut 3—7" x WOF strips
Sub cut into 16—6" finished Snowball blocks
- Cut 7—3" x WOF strips
Sub cut into 100—2½" squares

Binding Fabric:

- Cut 7—2½" x WOF strips

SEWING DIRECTIONS

1. Lay out four Fabric #1 squares, two Fabric #2 squares and three Fabric #3 squares as shown in Diagram 1.
2. Sew blocks together into rows. Pressing so seams will nest.
3. Sew rows together to make one 9-Patch block. Pressing seams in opposite directions. Block should measure 6½" x 6½".
4. Repeat previous three steps to make a total of 20, Unit #1 9-Patch blocks.
5. Lay out four Fabric #1 squares, three Fabric #2 squares and two Fabric #3 squares as shown in Diagram 2.
6. Sew blocks together into rows. Pressing so seams will nest.
7. Sew rows together to make one 9-Patch block. Pressing seams in opposite directions. Block should measure 6½" x 6½".
8. Repeat previous three steps to make a total of 20, Unit #2 9-Patch blocks.

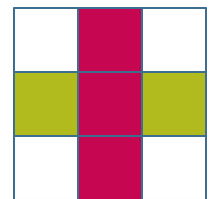


Diagram 1:
Unit #1
9-Patch Block

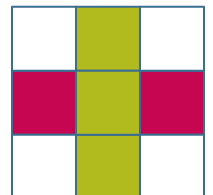


Diagram 2:
Unit #2
9-Patch Block

9. Lay out one Fabric #2 block and four Fabric #1 Half Square Triangles as shown in Diagram 3.

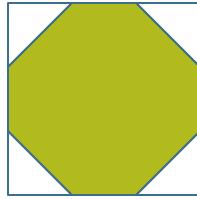


Diagram 3

10. Sew all four corners onto block, pressing towards the corners.

11. Repeat previous two steps to make a total of 25, Fabric #2 Snowball Blocks. Block should measure 6½" x 6½".

12. Lay out one Fabric #3 block and four Fabric #1 Half Square Triangles as shown in Diagram 4.

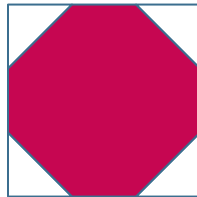
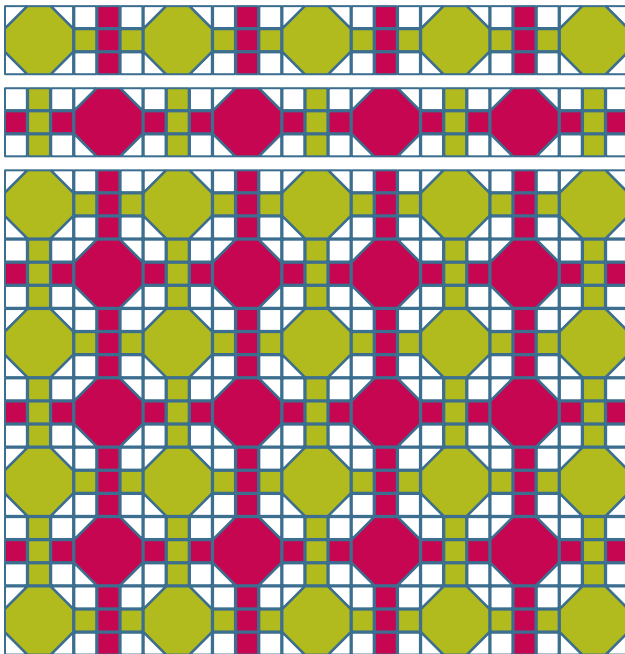


Diagram 4

13. Sew all four corners onto block, pressing towards the corners. Block should measure 6½" x 6½".

14. Repeat previous two steps to make a total of 16, Fabric #3 Snowball Blocks.

15. Lay out the 40, 9-Patch Blocks and 41, Snowball Blocks as shown alternating block placement. Quilt top should be nine blocks wide and nine blocks long.



16. Sew blocks into rows, pressing towards the Snowball Blocks.
17. Sew rows together, pressing seams in the same direction.

QUILTING AND FINISHING

1. Layer quilt top with batting and backing.
2. Pin or baste layers together.
3. Model was custom machine quilted.
4. Add binding, mitering the corners.