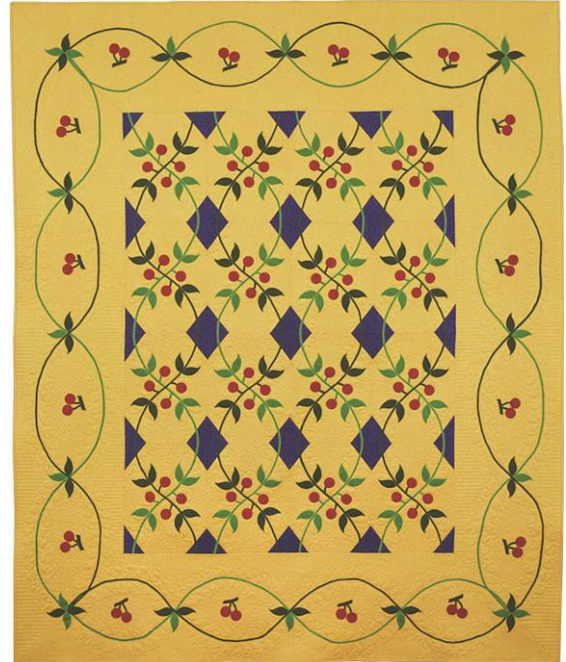


GO! Cherry Ripe Quilt

Finished Size 80" x 96"

Designed by Linda Pumphrey
Published in Fons & Porter's *Love of Quilting*, July/August 2015 issue



GO!® Dies Used, Number of Shapes to Cut & Fabric Requirements

Fabric Color	Shape	GO! Dies Used	Number of Shapes to Cut	Fabric Required
NOTE: Apply fusible web to the wrong side of asterisked fabrics following manufacturer's instructions before cutting appliqué shapes.				
*Dark Green	Leaves	GO! Round Flower (55007)	Cut 96—3 3/8"W x 1 3/4"H rectangles. Place over leaf shape and cut 64 leaves with fusible side down and cut 32 leaves with fusible side up.	2 yards
*Light Green	Leaves	GO! Round Flower (55007)	Cut 84—3 3/8"W x 1 3/4"H rectangles. Place over leaf shape and cut 52 leaves with fusible side down and cut 32 leaves with fusible side up.	1 3/4 yards
*Red	1 1/2" Circle (smallest)	GO! Circle-1 1/2", 1 3/4", 2 1/4", 2 1/2" (55155)	Cut 1—7 1/2" x WOF strip. Fanfold into 4" widths. Cut 20—3" finished squares	1/2 yard

Additional Fabrics Needed

- Yellow Print for Background and Binding—9 yards
 - Cut 10—2 1/4" strips using GO! Strip Cutter-2 1/4" (1 3/4" Finished) (55053) for binding
- Blue Print—1 yard
- Paper back fusible
- Backing—7 1/2 yards
- Batting—Queen-size

For full pattern, see Fons & Porter's *Love of Quilting*, July/August 2015 issue.