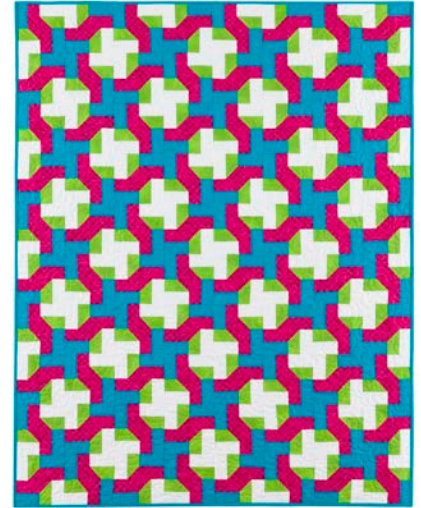








GO! Qube 6" Cutting Edge Throw Quilt

Finished Size 48" x 60"

For use with GO! Qube™ Mix & Match 6" Block (55775)
and GO! Qube™ 6" Companion Set-Classics (55779)

Fabric provided by Robert Kaufman Fabrics



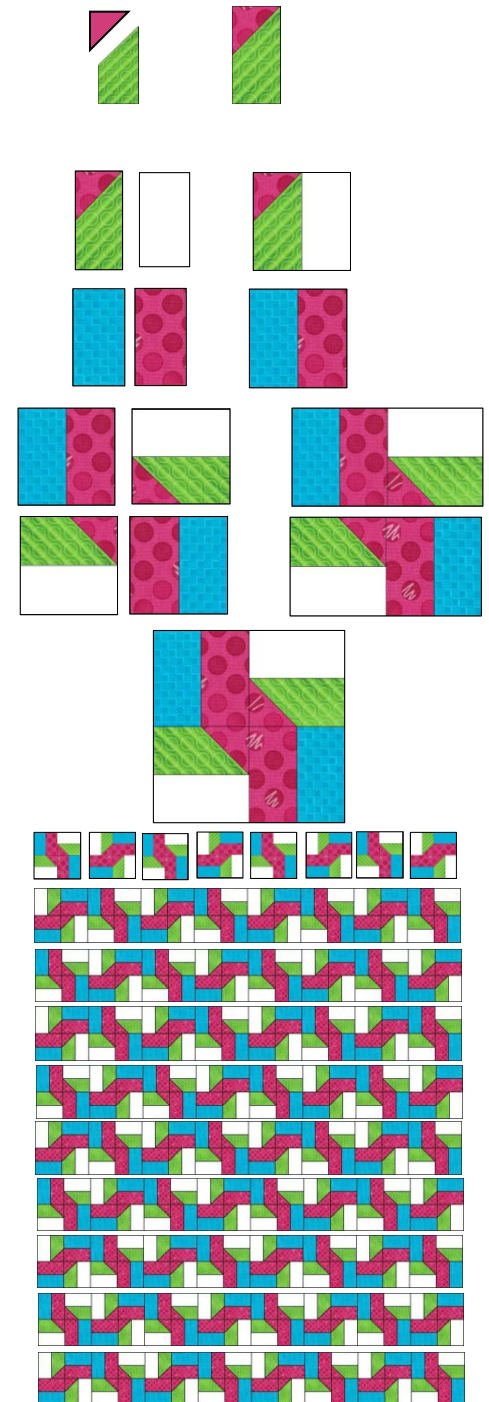
Fabric Color	Shape & #	GO! Dies Used	Number of Shapes to Cut	Fabric Required
Pink	 5	GO! Half Square Triangle-1½" Finished Square (55705)	Cut 4—5¼" x width of fabric (WOF) strips. Fanfold into 2 7/8" widths. Sub cut into 160—1½" finished half square triangles	1⅜ yards
Pink	 8	GO! Rectangle-2" x 3½" (1½" x 3" Finished) (55158)	Cut 10—4" x WOF strips. Fanfold into 4½" widths. Sub cut into 160—2" x 3½" rectangles	Yardage included above
Green	 9	GO! Chisels-1½" x 3" Finished (55733)	Cut 80—6¼" x 2½" rectangles. Place fabric wrong side up over the chisel shape and sub cut into 160—chisels	1 yard
Blue	 8	GO! Rectangle-2" x 3½" (1½" x 3" Finished) (55158)	Cut 10—4" x WOF strips. Fanfold into 4½" widths. Sub cut into 160—2" x 3½" rectangles	1½ yards
Blue	 8	GO! Strip Cutter-2½" (2" Finished) (55017 or 55014)	Cut 6—2½" x WOF strips for binding	Yardage included above
White	 8	GO! Rectangle-2" x 3½" (1½" x 3" Finished) (55158)	Cut 10—4" x WOF strips. Fanfold into 4½" widths. Sub cut into 160—2" x 3½" rectangles	1 yard

Additional Fabrics Needed:

- Backing Fabric—54" x 66"
- Batting—54" x 66"

Sewing Directions:

1. Pin and sew one pink 1½" finished half square triangle (HST) and one green 1½" x 3" finished chisel together as shown. Press seam toward the green chisel. Make 160 green chisel units.
2. Pin and sew one white 1½" x 3" finished rectangle and one green chisel unit together as shown. Press seam toward the white rectangle. Make 160 white rectangle quarter block units.
3. Pin and sew one blue 1½" x 3" finished rectangle and one pink 1½" x 3" finished rectangle together as shown. Press seam toward the pink rectangle. Make 160 blue rectangle quarter block units.
4. Lay out two green chisel quarter block units and two blue rectangle quarter block units as shown.
5. Pin and sew into half blocks. Press seams toward blue rectangle quarter block units. Make two half blocks.
6. Pin and sew half blocks together to complete the block. Press seam open. Make 80 blocks.
7. Lay out blocks in 10 rows of eight using the quilt diagram as a reference.
8. Pin and sew 10 rows. Press seams in alternating directions for each row.
9. Pin and sew 10 row units together. Press seams toward the added rows.

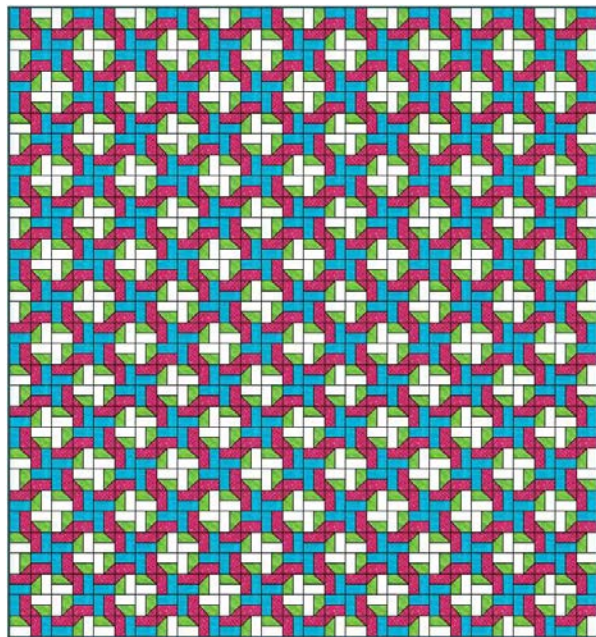
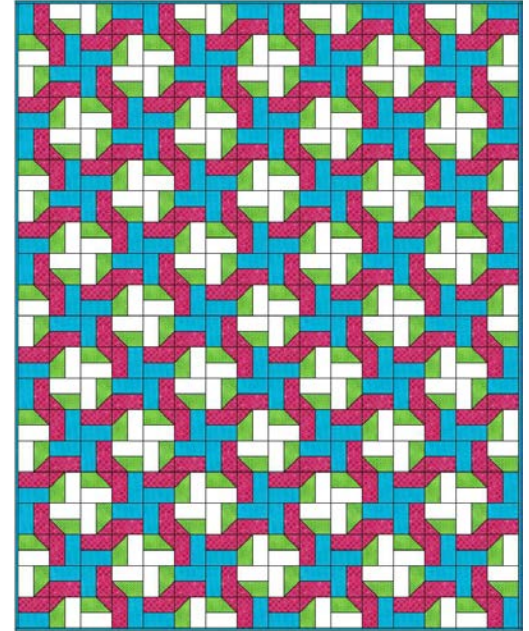


Quilting and Finishing:

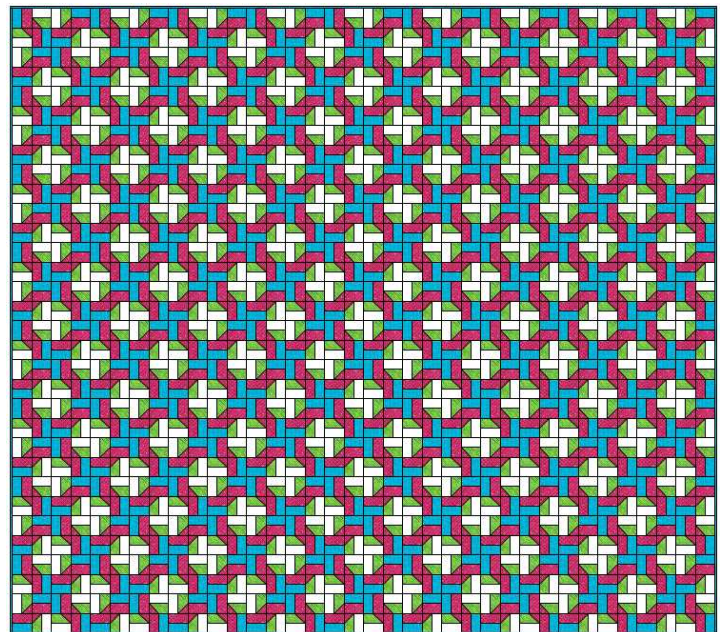
1. Layer batting between quilt top and backing.
2. Pin or baste layers together.
3. Quilt as desired.
4. Add blue fabric binding, mitering corners.

Additional Size Options:

- For a full size quilt measuring 84" x 90" make a total of 210 quilt blocks. Lay out blocks in 15 rows of 14 using the first diagram below as a reference.
- For a king size quilt measuring 108" x 96" make a total of 288 quilt blocks. Lay out blocks in 16 rows of 18 using the second diagram below as a reference.



Full Size



King Size