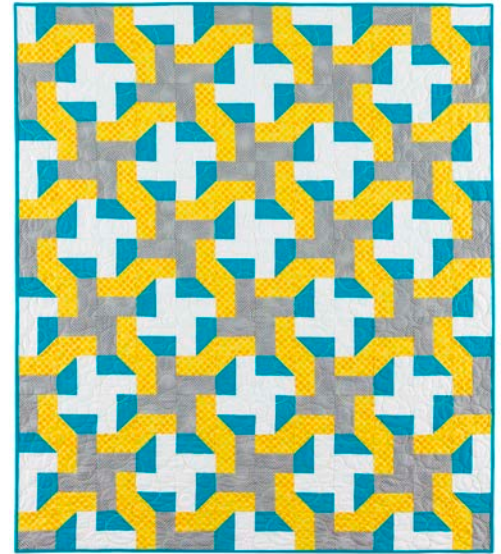







GO! Qube 8" Cutting Edge Throw Quilt


Finished Size 48" x 56"

For use with GO! Qube™ Mix & Match 8" Block (55776)
and GO! Qube™ 8" Companion Set-Classics (55780)

Fabric provided by Robert Kaufman Fabrics



Fabric Color	Shape & #	GO! Dies Used	Number of Shapes to Cut	Fabric Required
Yellow	 5	GO! Half Square Triangle-2" Finished Square (55712)	Cut 4—3¾" x width of fabric (WOF) strips. Fanfold into 3" widths. Sub cut into 84—2" finished half square triangles	1⅓ yards
Yellow	 8	GO! Rectangle-2½" x 4½" (2" x 4" Finished) (55715)	Cut 6—5" x WOF strips. Fanfold into 5½" widths. Sub cut into 84—2½" x 4½" rectangles	Yardage included above
Blue	 9	GO! Chisels-2" x 4" Finished (55734)	Cut 84—5" x 3" rectangles. Place fabric wrong side up over the chisel shape and sub cut into 84—chisels	1½ yards
Blue		GO! Strip Cutter-2½" (2" Finished) (55017 or 55014)	Cut 6—2½" x WOF strips for binding	Yardage included above
Grey	 8	GO! Rectangle-2½" x 4½" (2" x 4" Finished) (55715)	Cut 6—5" x WOF strips. Fanfold into 5½" widths. Sub cut into 84—2½" x 4½" rectangles	1 yard

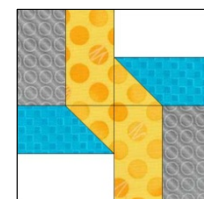
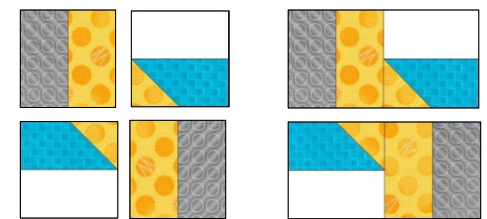
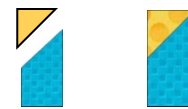
White		8	GO! Rectangle-2½" x 4½" (2" x 4" Finished) (55715)	Cut 6—5" x WOF strips. Fanfold into 5½" widths. Sub cut into 84—2½" x 4½" rectangles	1 yard
-------	---	---	---	---	--------

Additional Fabrics Needed:

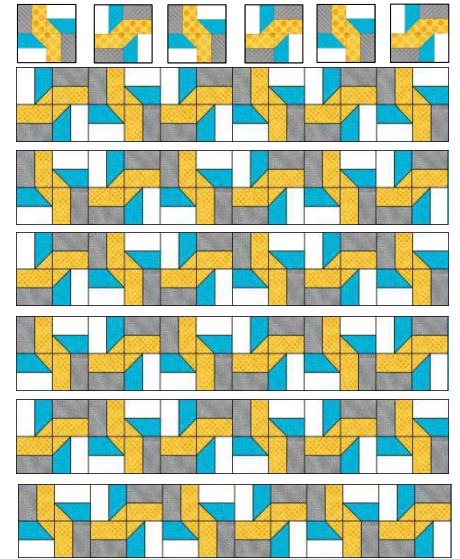
- Backing Fabric—54" x 62"
- Batting—54" x 62"

Sewing Directions:

1. Pin and sew one yellow 2" finished half square triangle (HST) and one blue 2" x 4" finished chisel together as shown. Press seam toward the yellow triangle. Make 84 blue chisel units.
2. Pin and sew one white 2" x 4" finished rectangle and one blue chisel unit together as shown. Press seam toward the white rectangle. Make 84 white rectangle quarter block units.
3. Pin and sew one grey 2" x 4" finished rectangle and one yellow 2" x 4" finished rectangle together as shown. Press seam toward the grey rectangle. Make 84 grey rectangle quarter block units.
4. Lay out two white rectangle quarter block units and two grey rectangle quarter block units as shown.
5. Pin and sew into half blocks. Press seams toward grey rectangle quarter block units. Make two half blocks.
6. Pin and sew half blocks together to complete the block. Press seam open. Make 42 blocks.

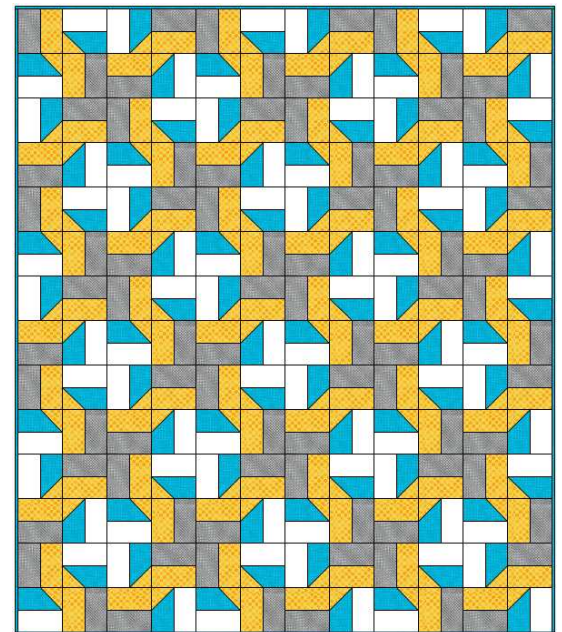


7. Lay out blocks in seven rows of six using the quilt diagram as a reference.
8. Pin and sew seven rows. Press seams in alternating directions for each row.
9. Pin and sew seven row units together. Press seams toward the added rows.



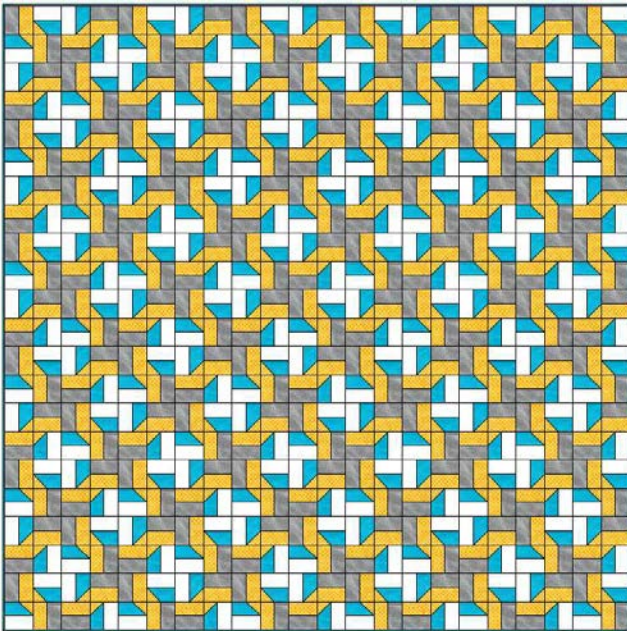
Quilting and Finishing:

1. Layer batting between quilt top and backing.
2. Pin or baste layers together.
3. Quilt as desired.
4. Add blue fabric binding, mitering corners.

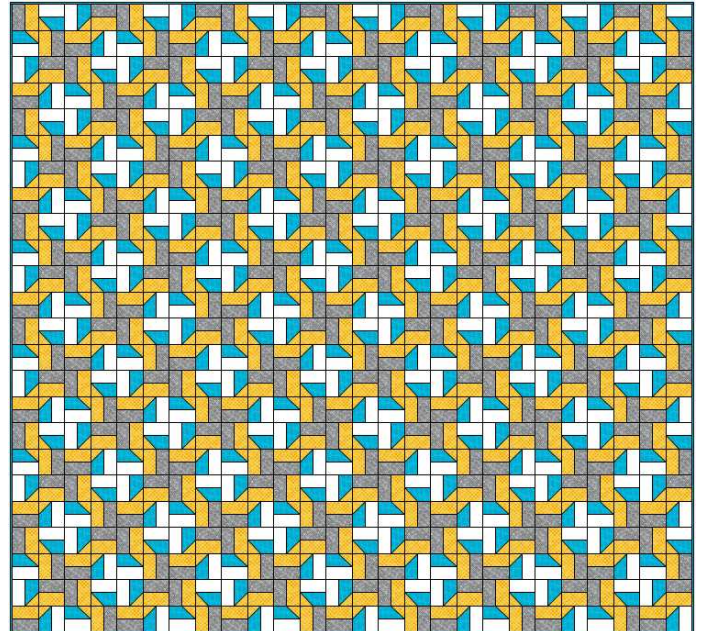


Additional Size Options:

- For a full size quilt measuring 88" x 88" make a total of 121 quilt blocks. Lay out blocks in 11 rows of 11 using the first diagram below as a reference.
- For a king size quilt measuring 104" x 96" make a total of 156 quilt blocks. Lay out blocks in 12 rows of 13 using the second diagram below as a reference.



Full Size



King Size