

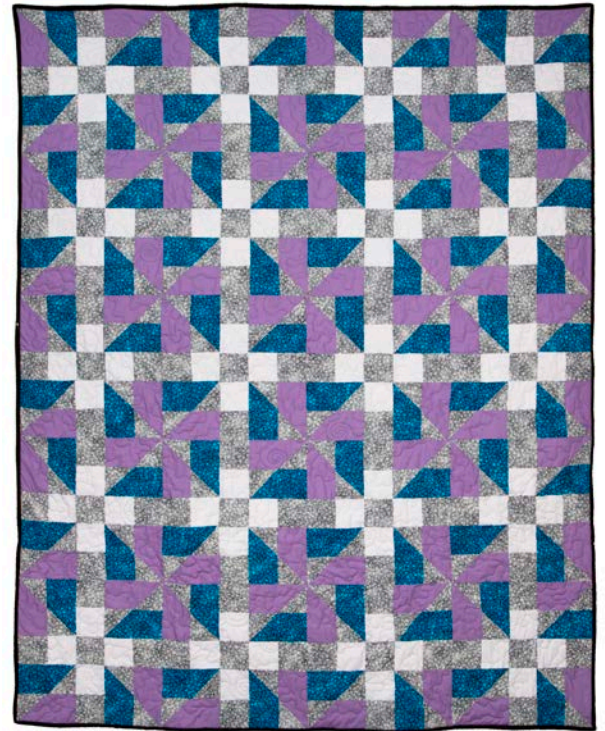
GO! Qube 12" Chisel Around Quilt

Finished Size 60" x 75"

For use with

GO! Qube™ Mix & Match 12" Block (55778) and
GO! Qube™ 12" Companion Set-Classics (55782)

Fabric provided by Robert Kaufman Fabrics
Sewn and quilted with Sulky 30wt Cotton Thread



To make a 12" Block use

GO! Qube Mix & Match 12" Block (55778)

- GO! Square-3½" (3" Finished) (Shape 2)
- GO! Half Square Triangle-3" Finished Square (Shape 5)

GO! Qube 12" Companion-Classics (55782)

- GO! Chisels-3" x 6" Finished (Shape 9)

Additional Dies Needed:

- GO! Strip Cutter-2¼" (1¾" Finished) (55053)

Cutting Directions:

Fabric Color	Shape	GO! Dies Used	Number of Shapes to Cut	Fabric Required
Light Gray	2	GO! Square-3½" (3" Finished)	Cut 10—4" x width of fabric (WOF) strips. Fanfold into 4" widths. Sub cut into 100—3" finished squares	2¼ yards
Light Gray	5	GO! Half Square Triangle-3" Finished Square	Cut 10—4" x WOF strips. Fanfold into 4¾" widths. Sub cut into 160—3" finished half square triangles	Yardage included above

Fabric Color	Shape	GO! Dies Used	Number of Shapes to Cut	Fabric Required
Aqua	9	GO! Chisels-3" x 6" Finished	Cut 80—7" x 4" rectangles. Place fabric right side up over the chisel shape and sub cut into 80—chisels	1¼ yards
Purple	9	GO! Chisels-3" x 6" Finished	Cut 80—7" x 4" rectangles. Place fabric right side up over the chisel shape and sub cut into 80—chisels	1¼ yards
White	2	GO! Square-3½" (3" Finished)	Cut 8—4" x width of fabric (WOF) strips. Fanfold into 4" widths. Sub cut into 80—3" finished squares	¾ yard
Black		GO! Strip Cutter-2¼" (1¾" Finished) (55053)	2¼" x WOF strips for binding	1¼ yards

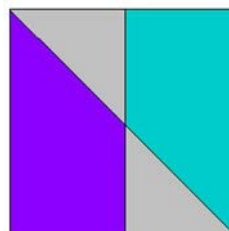
Additional Fabrics Needed:

- Backing—4 yards
- Batting—4 yards

Sewing Directions:

Press all seams open and use ¼" seams, unless otherwise indicated.

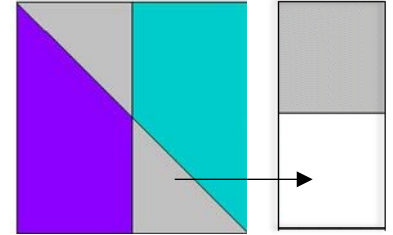
1. Sew a gray half square triangle (HST) (Shape 5) onto a purple chisel (Shape 9). Press seam toward the gray HST. Make a total of 80 purple chisel units.
2. Sew a gray HST (Shape 5) onto an aqua chisel (Shape 9). Press seam toward the gray HST. Make a total of 80 aqua chisel units.
3. Sew one purple chisel unit and one aqua chisel unit together as shown making sure the gray HST is pointed in the opposite direction and matching seams together. Make 80 aqua/purple chisel units. Set aside.



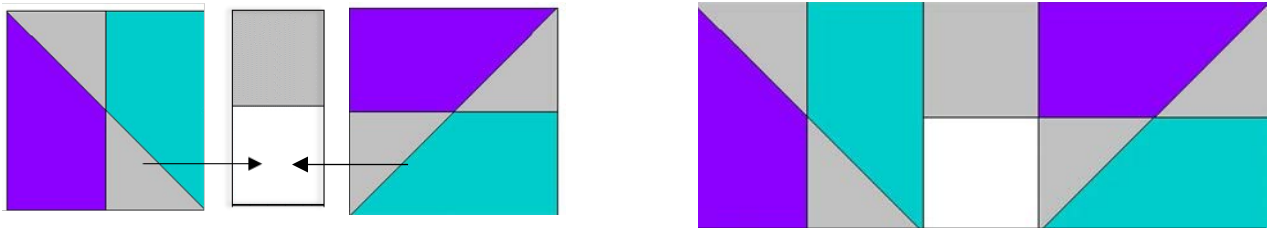
4. Sew a white square (Shape 2) and gray square (Shape 2) together as shown. Make a total of 80 square units.



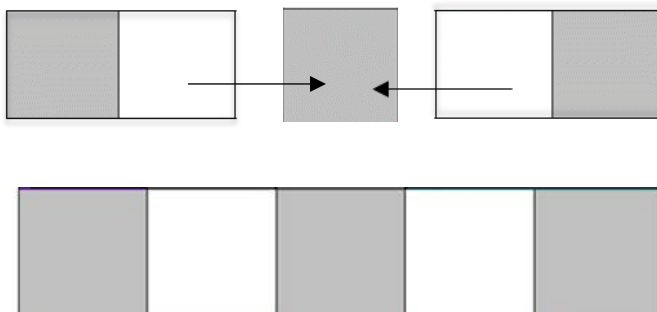
5. Sew an aqua/purple chisel unit to a square unit as shown.



6. Take another aqua/purple chisel unit and turn horizontally with the purple chisel on the top. Sew to the gray/white square unit being sure to line up your seams with the squares as shown. Make a total of 40 chisel/square units as shown.

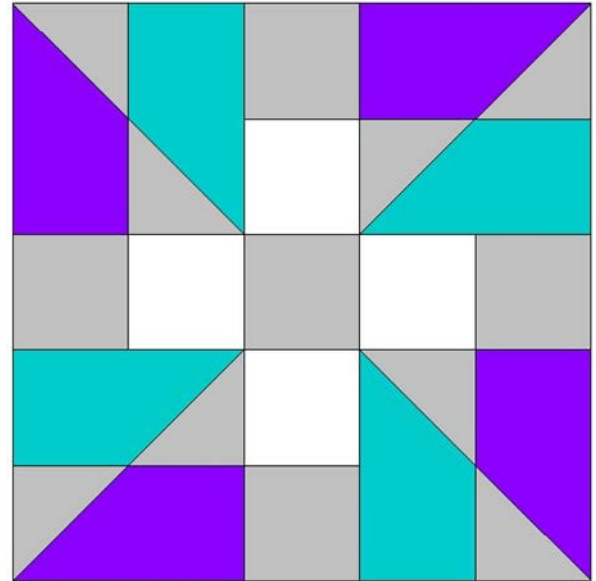
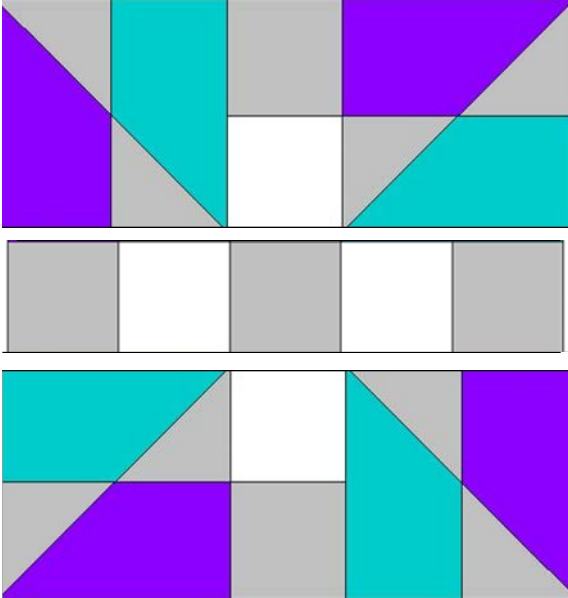


7. Sew one gray/white square unit to each side of one gray square (Shape 2) as shown. Be sure to flip one of the gray/white square units in the opposite direction so that the gray and white squares are alternated.



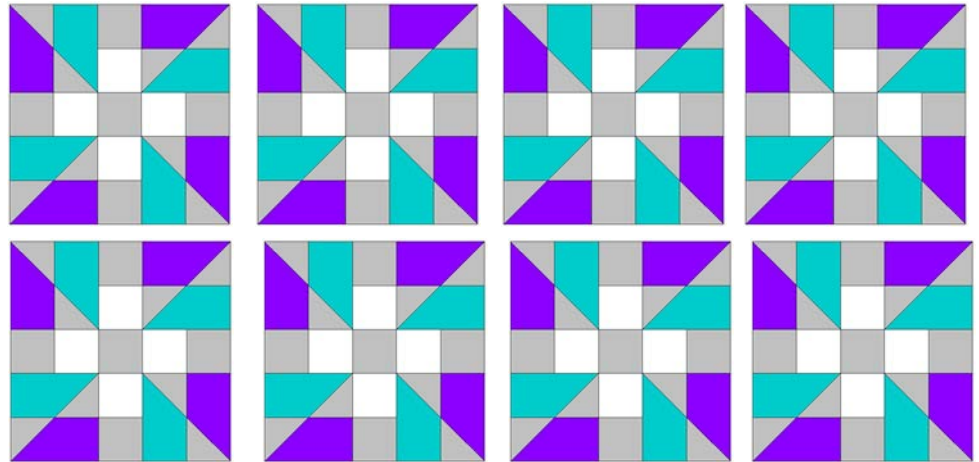
Assemble the Quilt Top

1. Lay out two chisel/square units and one gray/white square row unit as shown.

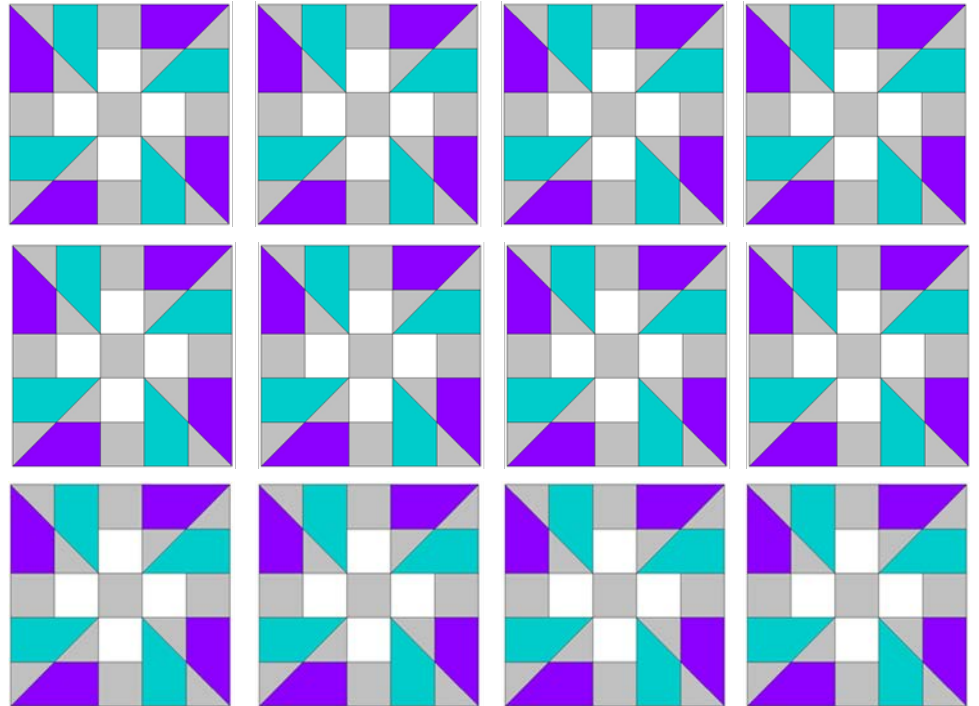


2. Sew units together to make one block. Make 20 blocks.

3. Referring to the quilt assembly diagram, arrange the pieced blocks in 4 vertical rows of five blocks each. Sew the blocks together. Press the seams in opposite directions on alternating rows.



4. Matching the block seams, sew the rows together. Press the seams in one direction.



Quilting and Finishing:

1. Layer batting between quilt top and backing.
2. Pin or baste layers together.
3. Quilt as desired.
4. Add black fabric binding, mitering corners.

