

## Crazy Cores

Designed & Quilted by Missy Shepler

Make an apple-core crazy quilt by piecing fabric scraps together before die cutting. This is a perfect project to play with color placement and to use all the small pieces of fabric you've been saving.

### Specifications

Skill Level: Advanced  
 Quilt Size: 56" x 74"

### Materials

- Assorted red print scraps
- 7/8 yard of coordinating red fabric
- Backing to size
- Batting to size
- GO! Dies:
  - GO! Apple Core (55036)
  - Optional: GO! Strip Cutter-2 1/4" (1 3/4" Finished) (55053)
  - Optional: GO! Strip Cutter-6 1/2" (6" Finished) (55086)
- Basic sewing tools and supplies

### Die-Cutting Instructions

**Note:** Make any combination of pieced and one-fabric apple cores for a total of 192. Instructions are given for the sample quilt, which has 62 pieced and 130 one-fabric apple cores.

TIP: Use GO! Strip Cutter 6 1/2" to cut pieced rectangles.

### From assorted red print scraps:

- Stitch 2–5 scraps right sides together with straight lines of stitching to make a rectangle larger than 8" x 6 1/2" (Figure 1). Trim seam allowances to 1/4"; press open or to one side. Trim rectangle to 8" x 6 1/2". Make 62 pieced rectangles.

Position pieced rectangles on Apple Core die, avoiding placing seams directly on corner points or center notches. Die-cut 62 pieced apple core pieces.

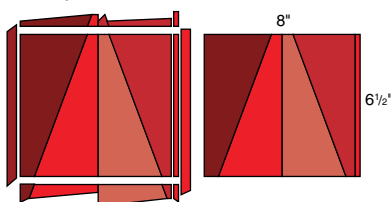


Figure 1

- Cut 8" by fabric width strips or 8" x 6 1/2" rectangles. Fan-fold strips 6 1/2" wide or stack 6 rectangles together and die-cut 130 apple core pieces.

### Additional Cutting Instructions

TIP: Use GO! Strip Cutter 2 1/4" to cut binding strips.

### From coordinating red fabric:

- Cut 8 (2 1/4" by fabric width) binding strips. **Note:** If you prefer a curved, not straight, edge on your quilt, cut a total of at least 280" of bias strips for binding.

### Completing the Quilt

1. Machine- or hand-stitch over the seam lines of the pieced apple cores as desired. **Note:** This is a great opportunity to explore the specialty stitches on your machine.
2. Arrange apple cores into 16 rows of 12 apple cores each. Alternate the color placement and the orientation of every other piece referring to Figure 2. **Note:** Depending on your fabric choices, you may want to place apple cores according to color or value. The quilt shown loosely follows a diagonal light to dark value placement, with most of the pieced apple cores following the diagonal scheme.

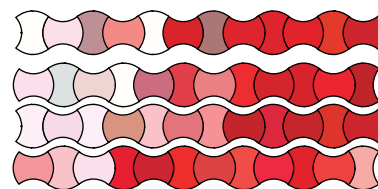


Figure 2



3. With right sides together, and aligning raw edges and center notches, pin and stitch the first two apple cores in row 1 together along one curved edge (Figure 3). Clip the curve and press the seam open. Repeat to join the remaining row 1 and row 2 apple cores into pairs.

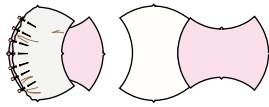


Figure 3

4. With right sides together, and aligning raw edges, center notches and seams, pin and stitch one row 1 pair to one row 2 pair of apple cores (Figure 4). Clip the curves; press the seams open referring to the arrows in Figure 4. Repeat to join the remaining row 1 and 2 pairs into 4-patch units.

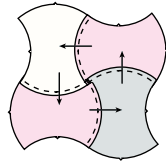


Figure 4

5. Repeat steps 3 and 4 to join the remaining rows into 4-patch units.

6. With right sides together, and aligning raw edges, center notches and seams, pin and stitch two 4-patch units together along adjacent edges. Clip the curves; press the seam open. Repeat with a second set of 4-patch units (Figure 5). Join the two units together to make one 16-patch unit.

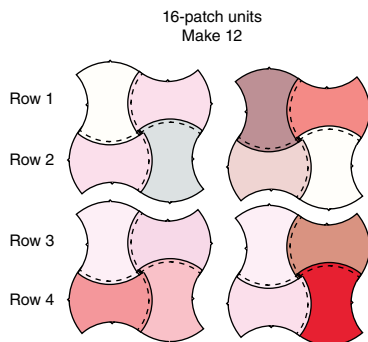


Figure 5

7. Repeat with the remaining 4-patch units to make 12 (16-patch) units. Join the 16-patch units together along adjacent edges to complete the quilt top.

8. For a curved-edge outer edge finish, stay-stitch  $\frac{1}{8}$ " from the curved outer edge perimeter of the quilt. Trim the excess batting and backing even with the quilt top.

9. For a straight-edge finish, align a clear acrylic rotary ruler along the innermost curves at the outer edges of the top and bottom of the quilt (Figure 6a). Carefully trim the excess patch pieces, batting and backing along this line. Repeat on the quilt sides referring to Figure 6b.

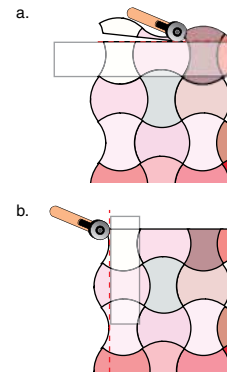
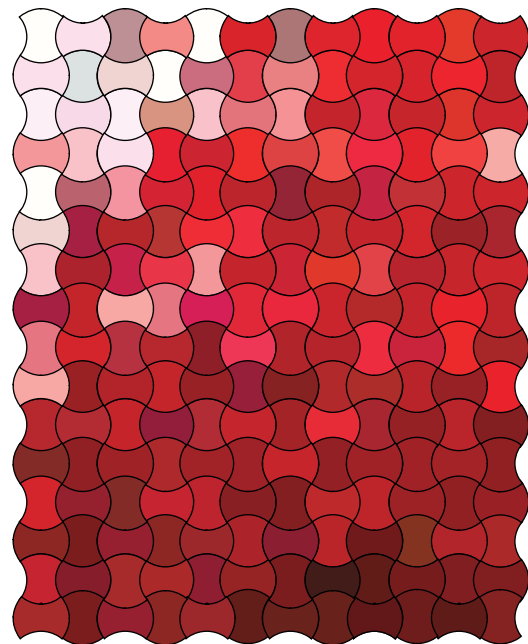


Figure 6

10. Layer, quilt and bind as desired to complete the quilt. **Note:** Use bias binding strips for a curved-edge finish. ❖



**Crazy Cores**  
Placement Diagram 56" x 74"

