



Use with:



Green Means GO!

Design by Gina Gempesaw
Quilted by Carole Whaling

Use your scraps, a white background and add a larger border for this fun bubble appliqué. This quilt also has possibilities for size options.

Specifications

Skill Level: Confident Beginner

Quilt Size: 56½" x 67"

Block Size: 8" x 8" finished

Number of Blocks: 20

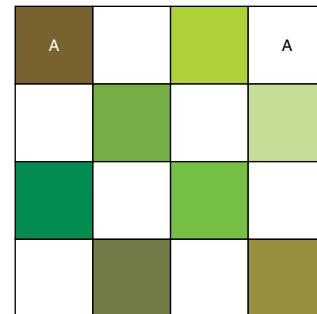
Materials

- Assorted green print scraps
- ⅝ yard green tonal
- 3¾ yards white tonal
- Backing to size
- Batting to size
- Thread
- 1 yard paper-backed fusible web
- 1 yard tear-away or wash-away fabric stabilizer (optional)
- GO! Dies:
 - GO! Square-2½" (2" Finished) Multiples (55059)
 - GO! Square-3½" (3" Finished) (55006)
 - GO! Circle-2", 3", 5" (55012)
 - GO! Strip Cutter-3" (2½" Finished) (55084)
 - Optional: GO! Strip Cutter-2¼" (1¾" Finished) (55053)
- Basic sewing tools and supplies

Die-Cutting Instructions

From assorted green print scraps:

- Die-cut 160 A squares using 2½" square die.
Trim large scraps to 8½" square to cut 9 (2½") squares per scrap or position 3½" square scraps individually over squares on die to cut A squares.
- Die-cut 4 (5"), 6 (3") and 10 (2") circles using the Circle die.
Cut scraps 1" larger than the circle to be cut and apply same-size paper-backed fusible web to wrong side of scrap. Position fused scraps fabric side up, individually, over circle size required on die to cut circles.



16-Patch Block
8" x 8" Finished Block
Make 20

From white tonal:

- Cut 4 (8½" by fabric width) strips; fan-fold 8½" wide. Die-cut 160 A squares using 2½" square die.
- Cut 1 (8" by fabric width) strip; fan-fold 4½" wide. Die-cut 6 B squares using 3½" square die.
- Cut 4 (7" by fabric width) strips; fan-fold 7" wide. Die-cut 8 (3" by fabric width) strips using the 3" strip cutter.
Rotary subcut the strips into 31 (3" x 8½") C sashing strips and 6 (3") D squares for cornerstones.
- Set aside remaining white tonal for additional rotary cutting.

Additional Cutting Instructions

TIP: Use GO! Strip Cutter-2¼" (1¾" Finished) (55053) to cut 7-2¼" x WOF strips for binding.

From white tonal:

- Cut 2 (9" x 50½") E borders along length.
- Cut 2 (9" x 57") F borders along the length.

From green tonal:

- Cut 7 (2¼" by fabric width) strips for binding.

Completing the Quilt

1. Referring to the block drawing, choose and arrange eight each green print scraps and white tonal A squares into four rows of four squares.



Stitch together in rows pressing seams in opposite directions between rows. Stitch the rows together pressing seams in one direction to complete one 16-Patch block. Repeat to make 20 blocks.

2. Remove paper from a 2" circle. Center and fuse on a B square (Figure 1). Trim fused square to 3" square referring again to Figure 1. Repeat to make 6 circle

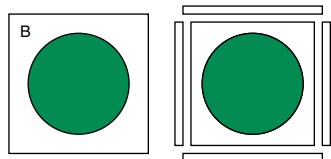
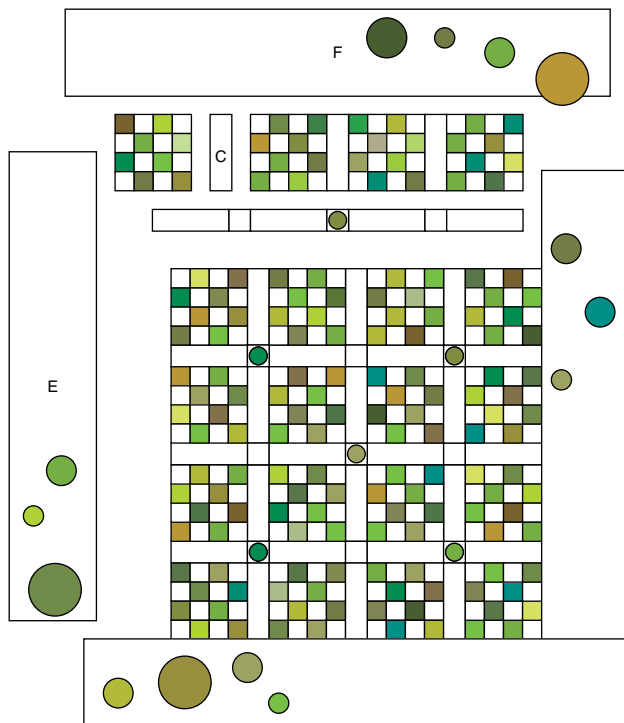


Figure 1

cornerstones.

3. Machine buttonhole-stitch or blanket-stitch around each circle to appliqué in place. **Note:** Using fabric stabilizer behind the area to be stitched helps create a smooth stitch. Cut a piece of fabric stabilizer at least 1" larger than the appliqué piece and pin to the wrong side of the appliqué area. Stitch as instructed and



Green Means GO!
Assembly Diagram 56½" x 67"

remove the stabilizer.

4. Stitch four 16-Patch blocks alternately with three C sashing strips referring to the Assembly Diagram to make a block row; press seams toward C. Repeat to make five block rows.

5. Arrange and stitch four C sashing strips, two cornerstones and one D square together into Sash Row 1 referring to Figure 2. Press seams toward C. Repeat to

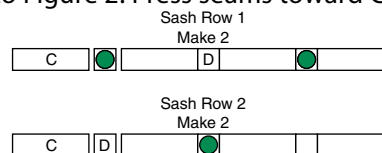
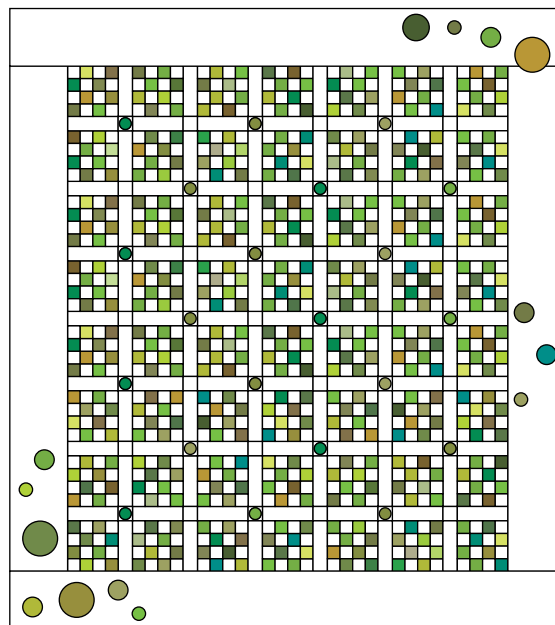


Figure 2

make two of Sash Row 1.

6. Arrange and stitch four C sashing strips, two D squares and 1 cornerstone together into Sash Row 2 referring again to Figure 2. Repeat to make two of Sash Row 2.

7. Stitch block rows and sash rows together referring to the Assembly Diagram for row placement and



Green Means GO! Alternate Size
Assembly Diagram 88" x 96"

Make 56 blocks and cut 48 more sashing strips to make 8 block rows with 7 blocks and 6 sashing strips in each row. Make 7 sashing rows as shown, alternating the B squares with circles and no circles. Use the same-width border strips as the smaller-size quilt. Remember to increase fabric yardages to make this larger-size quilt.

orientation; press seams toward sash rows.

8. Stitch E borders to opposite sides and F borders to top and bottom of quilt; press seams toward borders.

9. Position all remaining circles randomly on the bottom left and top right corners of the borders.

Remove paper and fuse circles onto border strips.

10. Machine buttonhole-stitch or blanket-stitch around each circle to appliqué in place. **Note:** *Using fabric stabilizer behind the area to be stitched helps create a smooth stitch. See note in step 3.*

11. Layer, quilt and bind as desired. ❖

