

alpha baby

GO! baby baby QUILT finished size 36" x 36"



FABRIC REQUIREMENTS

- Fabric 1—1¾ yards
- Fabric 2—1¼ yards (includes binding)
 - Fusible web—½ yard
 - Backing fabric—1¼ yards
 - Batting—42" x 42"
 - Fabric scraps for optional shapes

CUTTING DIRECTIONS

Fabric 1:

- Cut 36—6½" x 6½" squares

Fabric 2:

- Cut 4—2½" strips across the width of fabric
- Cut 144—2" half square finished triangles
- Cut one set of BABY letters with fusible web backing

BAY


alpha baby
55035

Use 5" x 10" mat (55110)

GO! Dies also used:

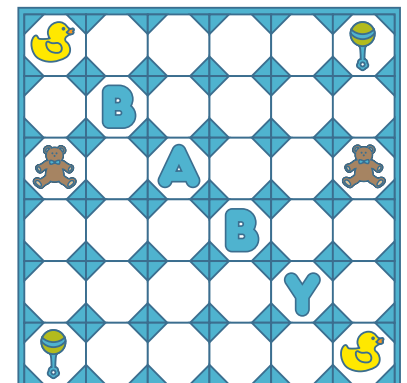
- Strip Cutter-2½" (55017)
- Square-6½" (55000)
- Half Square-2" Finished Triangle (Die packaged with fabric cutter)

SEWING DIRECTIONS

1. Layout four, 2" finished half square triangles right sides together on corners of one Fabric #1, 6½" square as shown. 
2. Pin and sew across long edge of triangles with ¼" seam allowances. Trim excess Fabric #1 beyond triangles. Press seams toward corners to complete "snowball" blocks.
3. Make 36 snowball blocks.
4. Remove paper backing from appliqué letters.
5. Position letters centered on snowball blocks. Fuse according to manufacturer's instructions.
6. Machine appliqué edges of appliqué shapes with a narrow zigzag or narrow satin stitch.
7. Layout quilt blocks according to diagram.
8. Pin and sew blocks into rows. Press seams open.
9. Pin and sew rows to complete quilt top. Press seams open.

QUILTING & FINISHING

1. Layer batting between quilt top and backing.
2. Pin or baste layers together.
3. Machine quilt with an all-over design.
4. Add binding, mitering corners.



Optional: Cut and fuse other fun appliqué shapes to blank squares cut from Baby, Baby (55037) and Lullaby (55038).