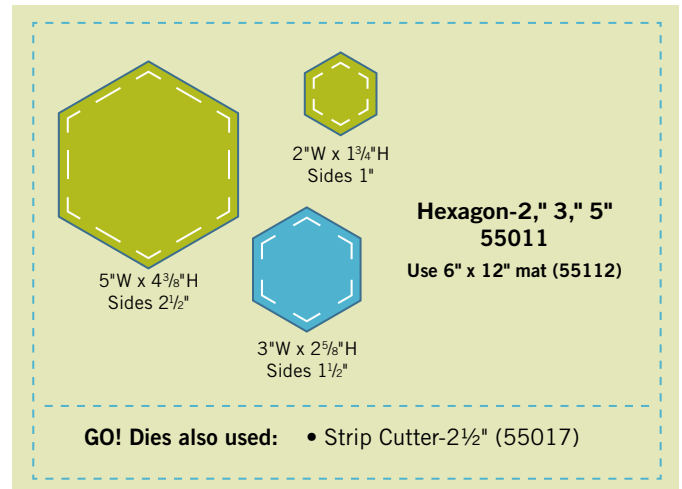
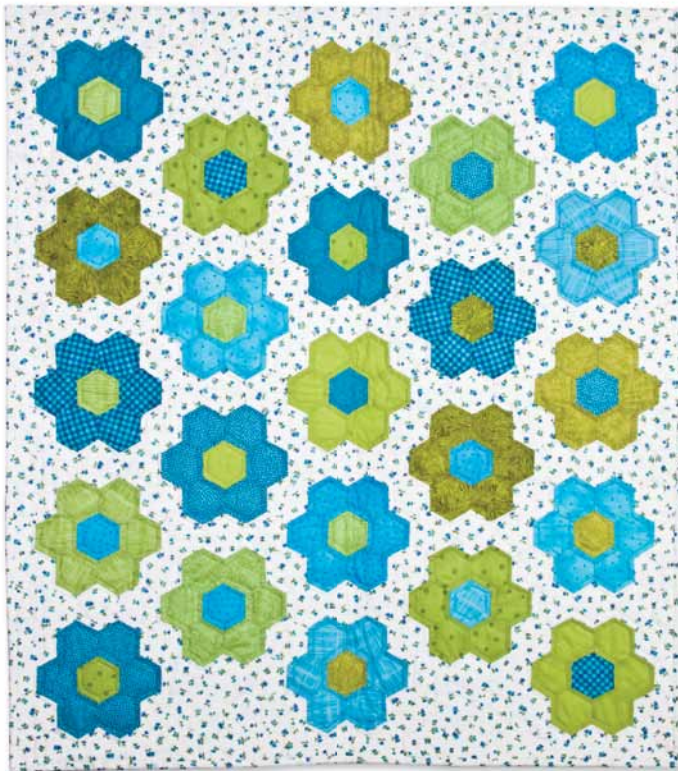


grandmother's flower garden to GO! QUILT

finished size 33" x 38"



FABRIC REQUIREMENTS

- Flower fabrics— $\frac{1}{8}$ yard cuts or fat quarters of 23 fabrics for flowers and centers
- Background fabric—2 yards
- Binding fabric— $\frac{1}{3}$ yard
- Backing fabric— $1\frac{1}{4}$ yards
- Batting—40" x 45"

CUTTING DIRECTIONS

Use the 3" hexagon shape on AccuQuilt GO! Hexagon-2, 3, 5" (55011)

Flower Fabrics:

- Cut 6—3" hexagons for each flower (quilt has 23 flowers)
- Cut 1—3" hexagon for each flower center

Background Fabric:

- Cut 186—3" hexagons

Binding Fabric:

- Cut 4— $2\frac{1}{2}$ " strips across the width of the fabric

Quilter's Tip

Cut one hexagon shape out of template plastic. Mark dots on template, as shown in Diagram 1, by drawing $\frac{1}{4}$ " seam allowance lines. Cut holes with small ($\frac{1}{8}$ ") hole punch where lines intersect. Use template and mechanical pencil to mark seam allowance stopping points on wrong side of fabric hexagons.

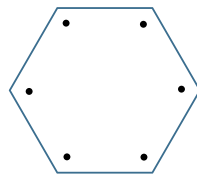


Diagram 1

SEWING DIRECTIONS

1. Lay out hexagons for each flower as shown in Diagram 2. Pin and sew two hexagons together using a $\frac{1}{4}$ " seam allowance. Start and stop $\frac{1}{4}$ " from edges of each hexagon. This can be marked using the template "corner" holes (see tip box). Reinforce stitching at beginning and end of each stitching line, shown by dots in Diagram 3.
2. Press all seams toward flower petal hexagons.
3. Continue to add hexagons one at a time in the same manner.
4. Continue stitching hexagon edges together to complete flower.
5. Add background hexagons between and around flowers as shown in photo/quilt diagram.
6. Continue adding background hexagons according to quilt diagram.
7. Remove any markings and press quilt top.
8. Layer batting between quilt top and backing.
9. Pin or baste layers together.
10. Quilt as desired. Model was machine quilted outlining each flower and flower center $\frac{1}{4}$ " from seam lines.
11. Remove any markings and press quilt if desired.
12. Grandmother's Flower Garden quilts can be bound with bias binding following edges of hexagons. They can also be trimmed with straight edges and bound with straight grain binding as shown on model and quilt diagram.

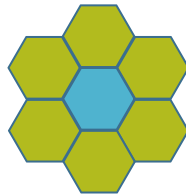
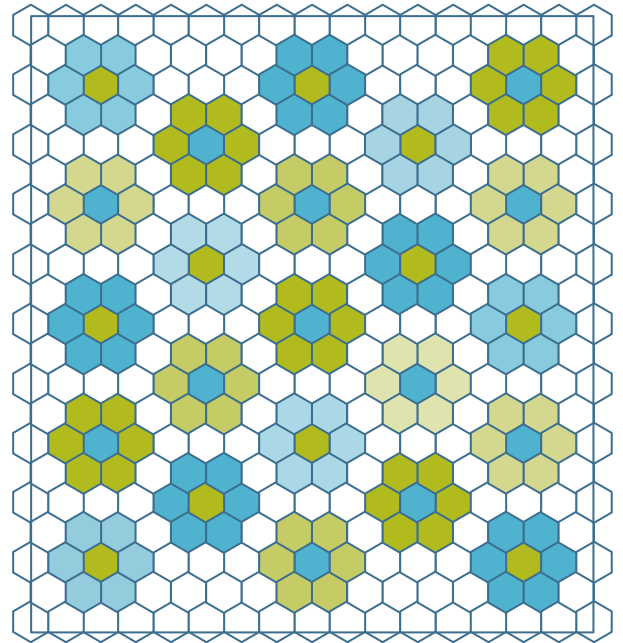


Diagram 2



Diagram 3



OPTIONS

1. Make more or less flowers for a custom size quilt.
2. Add partial flowers to sides instead of background hexagons.
3. Use one flower for a candlemat or coaster.
4. AccuQuilt GO! Hexagon-2", 3", 5" (55011) has three sizes of hexagons. Flowers made with the various sizes will measure from side to side (see Diagram 4):
 - 2" Hexagons will make a $3\frac{1}{2}$ " finished flower
 - 3" Hexagons will make a 6" finished flower
 - 5" Hexagons will make a 11" finished flower

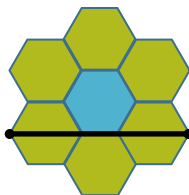


Diagram 4