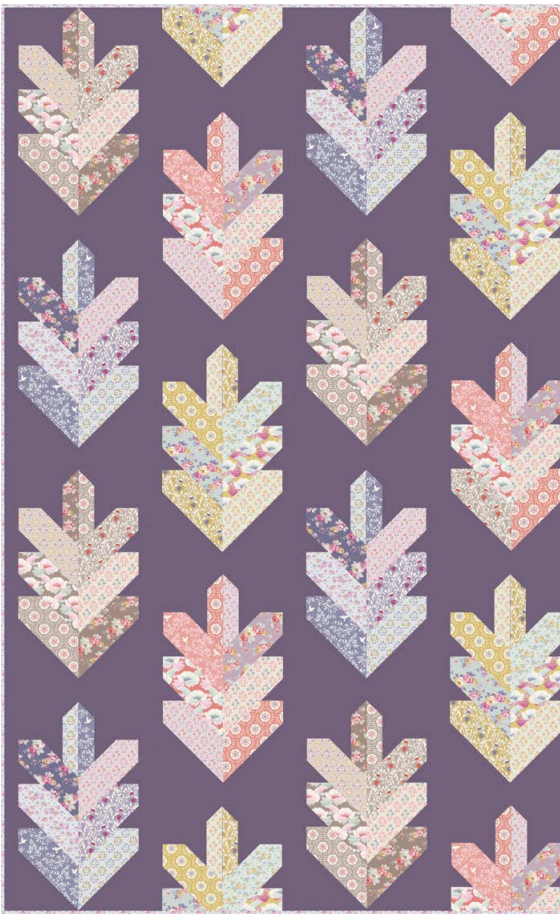




## Leaf Quilt

(Maple Farm Collection Autumn 2020)

This pretty quilt uses a single leaf block design in four different colourways, arranged in vertical columns. Some careful piecing is needed for this quilt. The version described here uses a Solid aubergine colour for the background. There is another version that uses terracotta for the background but you could choose another Tilda Solid shade.



Leaf Quilt

### Materials

- Fabric 1: 3¼yds (3m) – Solid aubergine (120036)
- Fabric 2: ¼yd (25cm) – Cherrybush sand (100266)
- Fabric 3: ¼yd (25cm) – Gracie sand (100267)
- Fabric 4: ¼yd (25cm) – Wheatflower umber (100269)
- Fabric 5: ¼yd (25cm) – Gwendelyn umber (100270)
- Fabric 6: ¼yd (25cm) – Pauline umber (100268)
- Fabric 7: ¼yd (25cm) – Meadow grey (130085)
- Fabric 8: ⅛yd (15cm) – Farm Berries sand (110020)
- Fabric 9: ¼yd (25cm) – Meadow slate (130088)
- Fabric 10: ¼yd (25cm) – Pauline blueberry (100274)
- Fabric 11: ¼yd (25cm) – Gracie lavender (100273)
- Fabric 12: ¼yd (25cm) – Cherrybush slate (100275)
- Fabric 13: ¼yd (25cm) – Farm Berries blue (110023)
- Fabric 14: ¼yd (25cm) – Birdie blueberry (100271)
- Fabric 15: ⅛yd (15cm) – Meadow blue (130089)
- Fabric 16: ⅛yd (15cm) – Gwendelyn rosehip (100263)
- Fabric 17: ⅛yd (15cm) – Farm Flowers lavender (110012)
- Fabric 18: ⅛yd (15cm) – Birdie rosehip (100265)
- Fabric 19: ¼yd (25cm) – Wheatflower rosehip (100261)
- Fabric 20: ⅛yd (15cm) – Pauline mauve (100264)
- Fabric 21: ⅛yd (15cm) – Farm Flowers rosehip (110009)
- Fabric 22: ⅛yd (15cm) – Meadow lilac (130090)
- Fabric 23: ⅛yd (15cm) – Gwendelyn dijon (100278)
- Fabric 24: ⅛yd (15cm) – Cherrybush dijon (100280)
- Fabric 25: ⅛yd (15cm) or fat eighth – Gracie teal (100279)
- Fabric 26: ¼yd (25cm) – Farm Flowers green (110016)
- Fabric 27: ⅛yd (15cm) – Pauline teal (100277)
- Fabric 28: ⅛yd (15cm) – Wheatflower dijon (100276)  
– you may have spare backing fabric
- Fabric 29: ⅛yd (15cm) – Meadow teal (130086)
- Wadding (batting) 75in x 86in (190.5cm x 218.5cm)
- Backing fabric: 3¼yds (3.5m) – Wheatflower dijon (100276)
- Binding fabric ½yd (50cm) – Meadow teal (130086)

### Finished Size

58in x 72½in (147cm x 184cm)